

特斯拉 model 3 智能门安装说明

Tesla model 3 smart door installation instructions

一. 拆前门板说明 The instruction for removing the front door panel



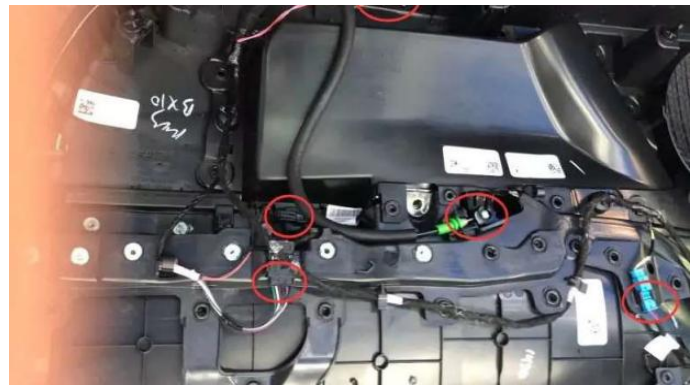
1. 卸下上图三处螺丝
Remove the three screws in the picture above



2. 用撬刀撬右下角 卸下门饰板
Pry the lower right corner with a pry knife to remove the door trim panel



3. 拿出标示处胶条和胶塞把玻璃螺丝对上孔位
Take out the rubber strip and rubber plug at the marking point and align the glass screw with the hole



4. 把与盖板相连的插线拔下，拿下盖板
Remove the plug wire connected to the cover plate and remove the cover plate



5. 把饰板处如图灯取出来插回去(非常重要)
Take out the lamp from the trim plate and insert it back
(very important)



6. 拿出标示处胶条和胶塞把两圆圈内玻璃螺丝拧出就可以直接把玻璃拿出来了
Take out the rubber strip and rubber plug at the mark and unscrew the glass screws inside the two circles to take out the glass directly



7.卸下固定饰板上的所有螺丝
Remove all screws from the fastening trim plate

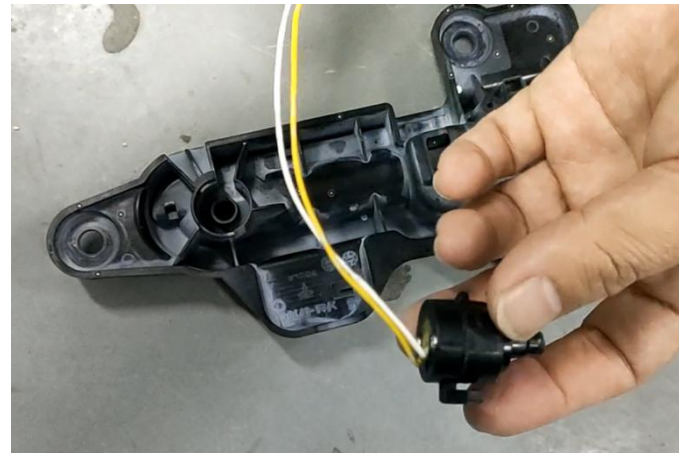


8.把与固定饰板上连接的所有线取下，用手从固定饰板下端用力往上提的同时 往外拉出即可取下饰板
Remove all the wires connected with the fixed plate and pull out the lower plate by hand while lifting the lower end of the fixed plate forcefully

二. 安装智能门



1.取出上图三颗螺丝，拆下原车把手
Take out the three screws in the picture above and remove the original handle



2.下压旋转取出原车按钮替换我司按钮
Press down and rotate, take out the original switch. Then Install our switch.



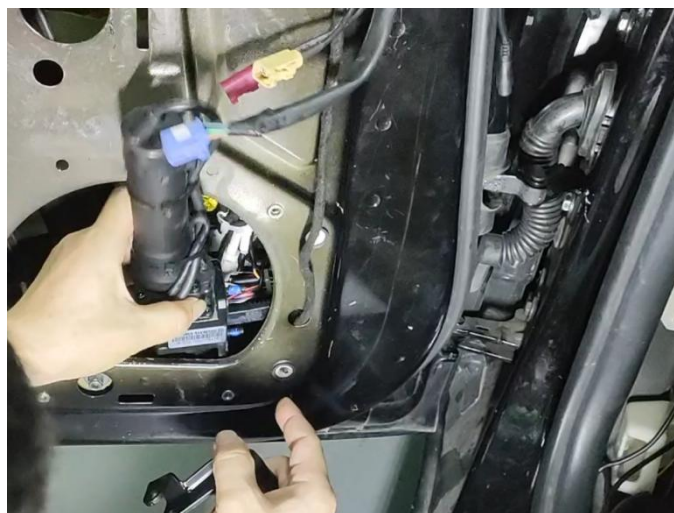
3.取下三颗螺丝安装我司电吸锁，用我司螺丝固定
Take out the three screws and install our suction lock. Fixed with our screws



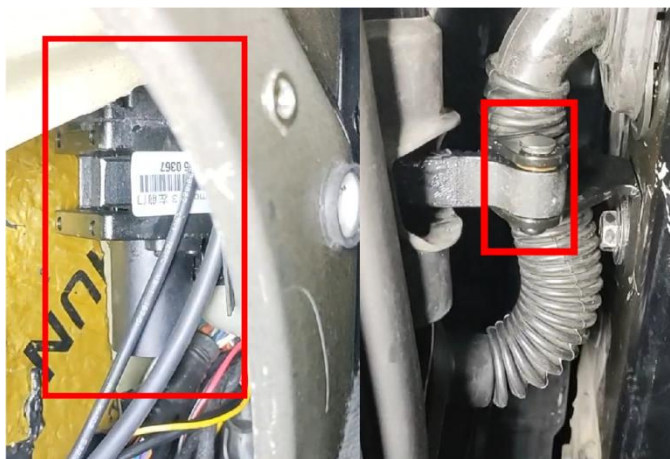
4.电吸插座与原车插头对插
Connect the suction lock to the original socket



5. 用工具分开智能门执行器铰链 Use the tools to separate the chain of the actuator.



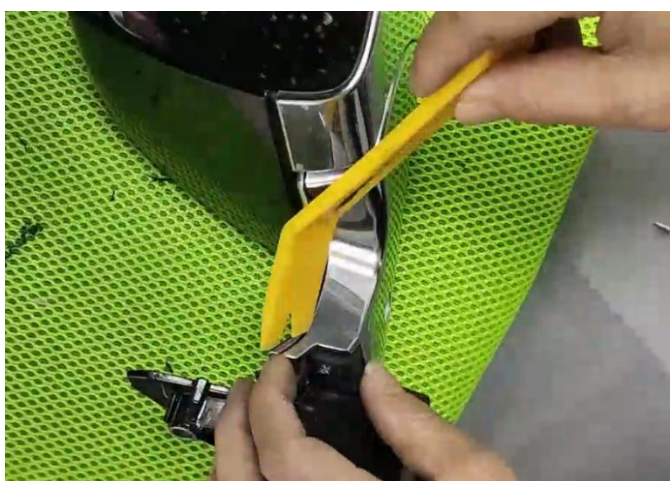
6. 拆下原车限位器安装智能门执行器，把执行器放入车门内对准孔位固定 Remove the shopper of the original car, and install the smart actuator. Put the actuator into the door and fixed it.



7. 把分开的铰链重新安装到一起 Install the chain.



8. 取下后视镜三颗螺丝，拔掉插座取下后视镜 Remove the screws of the Rearview mirror. Unplug the socket and take out the rearview mirror.



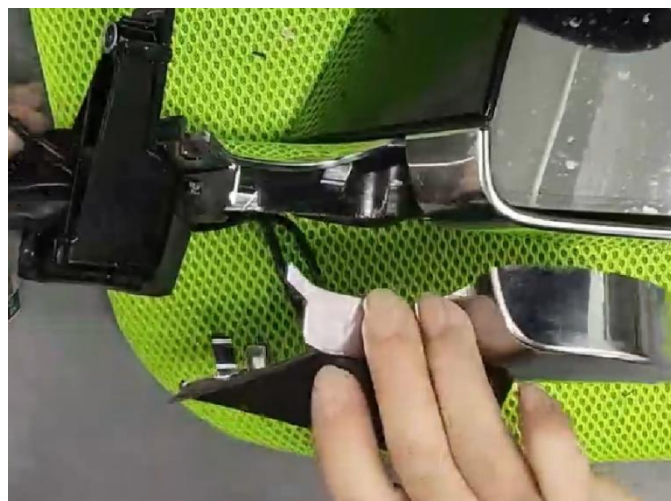
9. 用撬板取下盖板 Pry the cover



10. 用定位器在盖板开 3 个小孔 1 个大孔 Drill three small hole and a big hole by our cover.



11.把防撞雷达用三颗螺丝固定到盖板上
Fixed the anti-collision to the mirror cover.



12.把盖板安装回后视镜原位
Install the cover back to the rearview mirror.



13.把后视镜安装回原车上，对插好原车插头
Install the rearview mirror back to the car, connect the plug.



14.安装后方来车雷达
Install the rear radar.



15.拆下三处螺丝和尾灯 Remove three screws and the tail lamp.



16.掰开保险杠 Break open the bumper



17.把雷达从通风口穿线到后备箱饰板内最后走线到门板上 Thread the radar from the vent to the trim cover of the trunk, and put it to the door panel.



18.把感应器用 3M 胶横着固定, 注意感应器箭头向上朝向车外 Fix the sensor horizontally with 3M tape, pay attention to the sensor, the arrow pointing upwards, and face to rear side.



19.把自动开门雷达贴在侧后方玻璃上(贴的靠下一点)Paste the automatic opening radar to the side rear glass.



20.自动开门雷达如上图走线到门板上 The wiring of the automatic opening radar.



21.把顶蓬开关门按钮用 3M 胶贴在上图位置, 把线材隐藏在饰板缝隙内 Paste the roof switch to the position shown above by 3M sticker. Hide the cable between the trim panel gap.



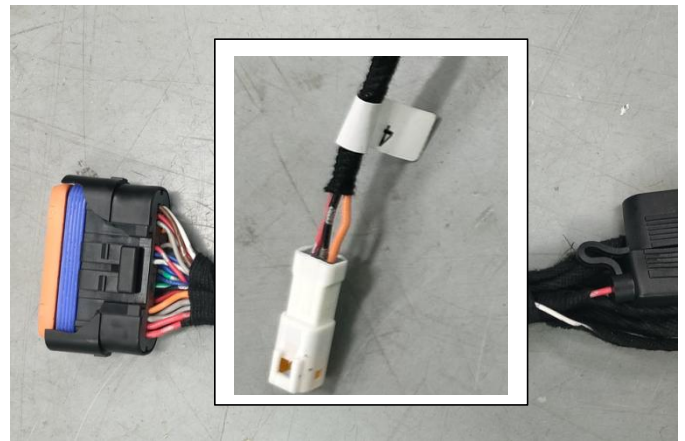
22. 在车前盖电池取电，左边找孔穿线至副驾驶
Take power at the front trunk. Find the hole on the left and threading the wire to the copilot.



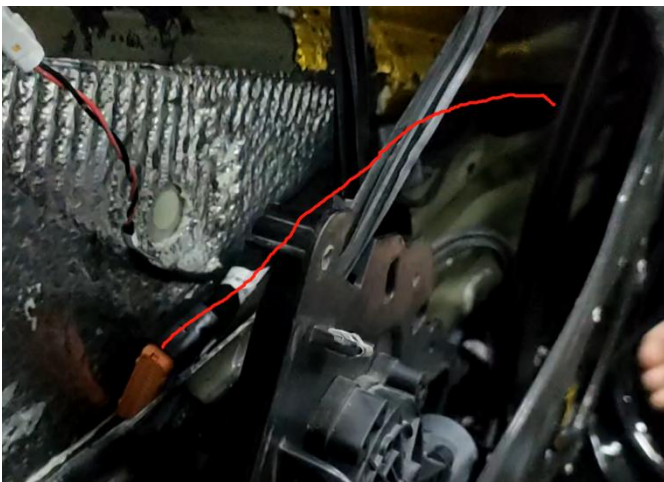
23. 拆开副驾 A 柱下方脚窝侧边饰板，找到蓝色原车协议插座，把协议线分别走线到对应的门板上
Remove the trim panel under the copilot A pillar. Find the original blue signal socket. Go through the signal wire to the corresponding door panel.



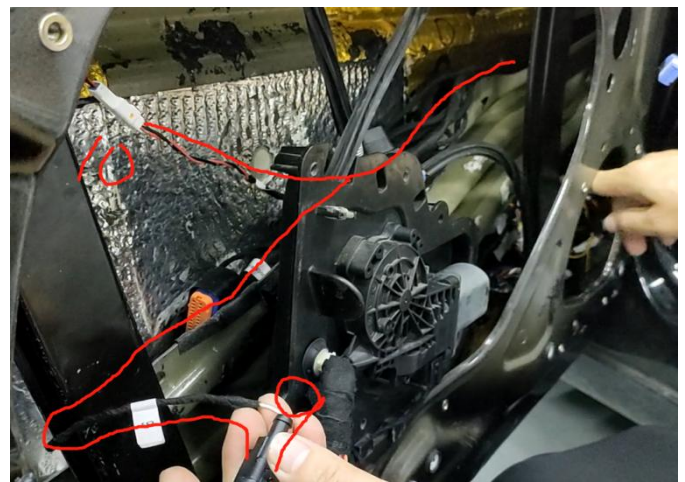
24. 安装主驾智能门，电源线、协议线如上图走线至门板上
Install the driver's intelligent, power wire, signal wire as the wiring shown above.



25. 把雷达、按键、电源、执行器、协议插头与上图总线按线材上的标签序号对插
Connect all the plug according to the number indicated by the sticker on the wire.



26. 对插好后把总线穿到门板如图位置
Connect the plug and go through to the door side as the picture shown above.



27. 九号线把手对插，十号线电吸锁对插
No. 9 cable connect to the handle. No. 10 cable connect to the suction lock.



28.八号线如上图走线
No.8 cable wiring.



29.八号线转插在门板上
No.8 connect to the door panel.



30.总线对插控制盒, 支架背面用 3M 胶固定在门板上
然后在红圈处固定一颗螺丝
The plug of the harness connect to the control box.
Paste one 3M sticker on the back, and fixed to the door
panel. Fixed one screw at the red circle position.

安装完成后测试功能
若功能一切正常
理顺好线材恢复饰板
Test the function after installation
If everything in good condition
Tidy up and fixed the wires and recover the
trim panel