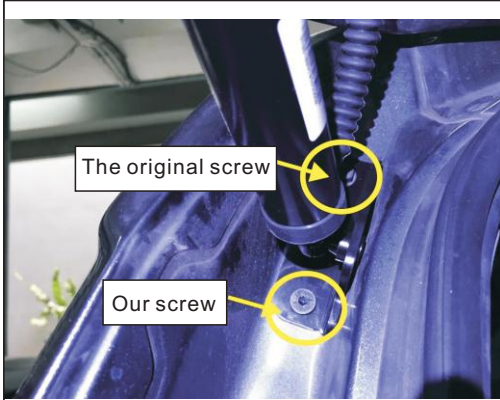


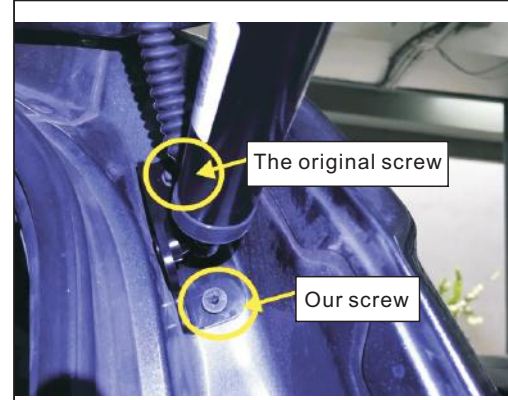
# INNOVA's electricity 4.6 installation instructions



1. Remove the original car poles and support, installation, bottom bracket and brace, under the support of screw screws, note: need someone hold the door



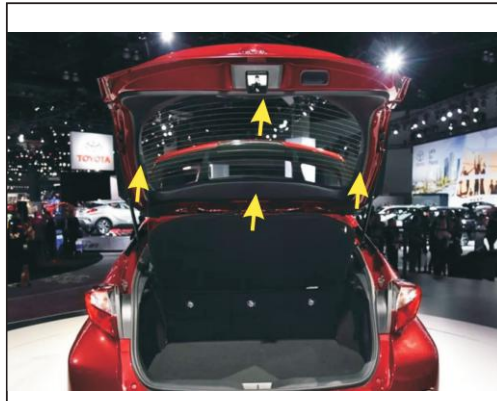
2. In the original car left bracket to install poles, with the original screw fixation



3. Remove the original car poles and bracket, installation lower bracket and brace, under the support of screw with our screw fixation



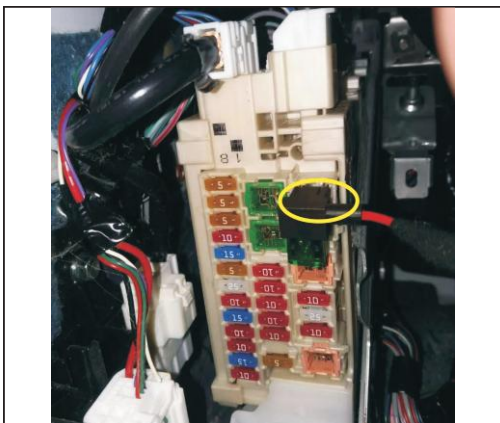
4. Use the original car upper bracket to install poles, with the original screw fixation



5. Remove the original rear door trim



6. At the original car stopper punched hole thread through the rubber plug hole poles go line to end door



7. Remove the plaque at the bottom of the left the co-pilot, find the power and ground, fuse, unplug the original car plug in our power plug



8. Connect ground wire



9. On the ground below to find the original car central, yellow Central Line after the seat: white line



10. To end the power cord from above the door cover plate



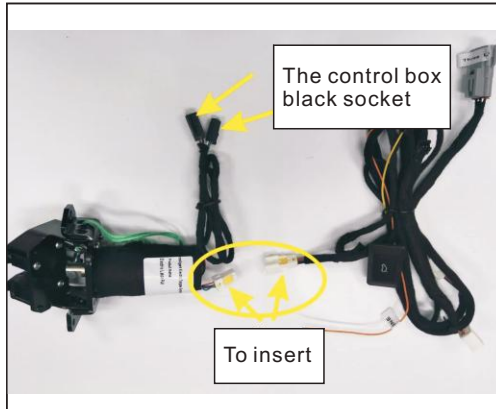
11. Remove the empty buttons, the main driving installation before we switch button



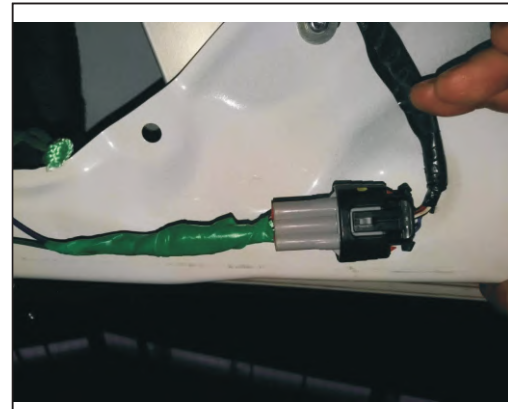
12. Before the door switch go line to end cover plate



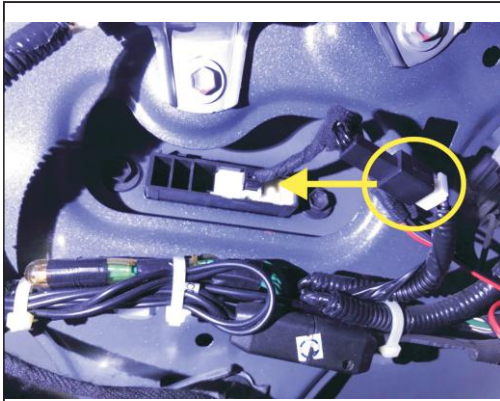
13. Remove the original car door lock, installed on our electric lock, use the original car screws



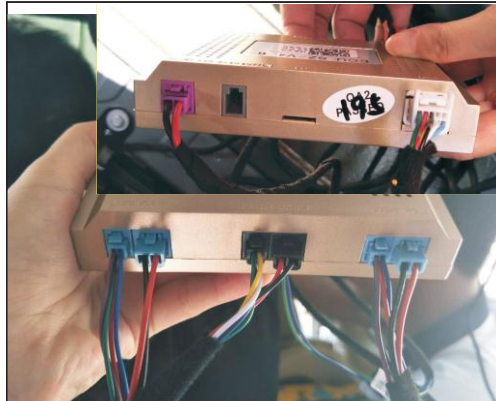
14. Plug as shown on our electric socket



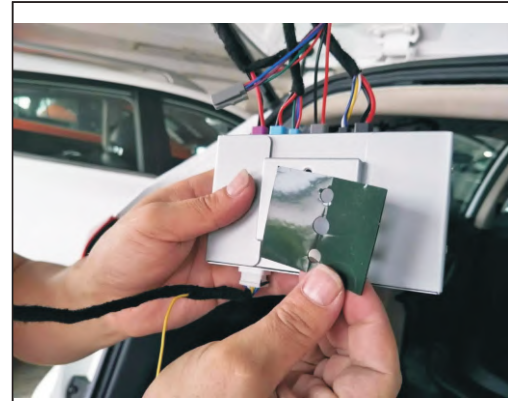
15. The tail door locks in unplug the original car plug adaptor to plug our tee



16. remove the socket to plug our former pulse switch socket



17. hall line, control line, the power cord according to color a pair we control box



18. Will our company 3 m glue on the control boxr tee



19. The installation position and control box, with our screws and washers



20. Remove the original car trim, install our stern door keys