

Nissan C26 electricity installation instructions



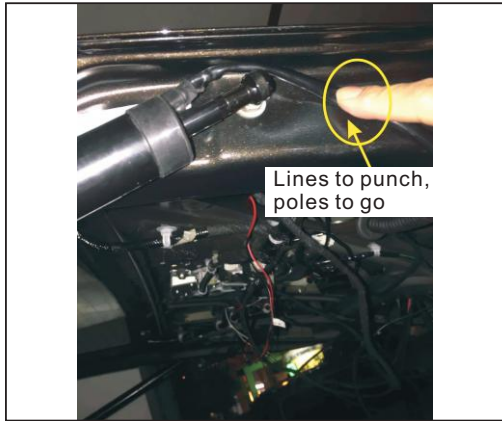
1. With the original car ball head to install poles, belt line the brace up (or steps)



2. Remove the original car bottom bracket, installation we lower left bracket (ball head) within the body, with screws



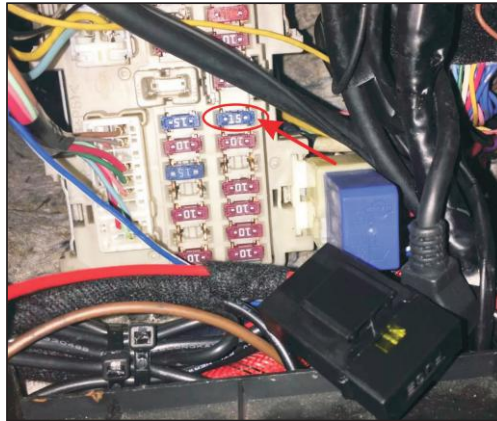
3. Remove the original car right bracket, installation we lower bracket (ball head) within the body, with screws



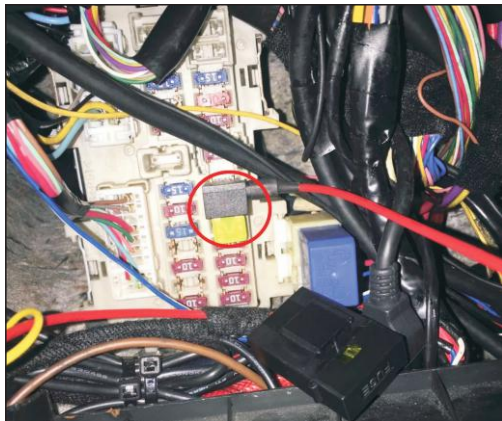
4. Punch in the original car ball head, stay bar thread through the hole to get the line door cover plate, rubber plug on the card



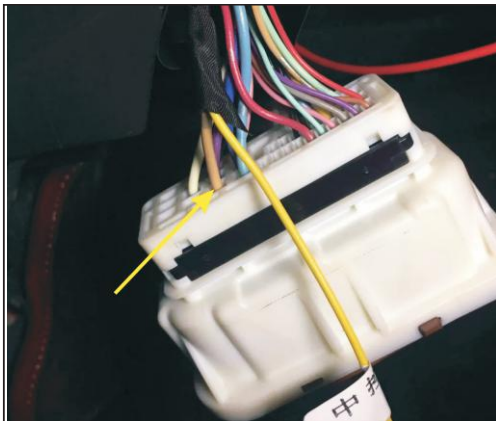
5. Remove the trim at the bottom of the co-pilot to find the original car power supply



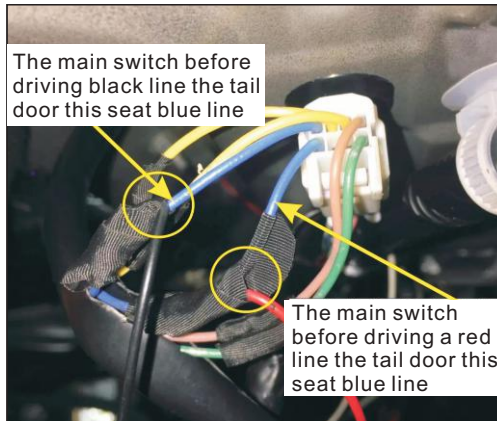
6. Remove the original car 15 a fuse



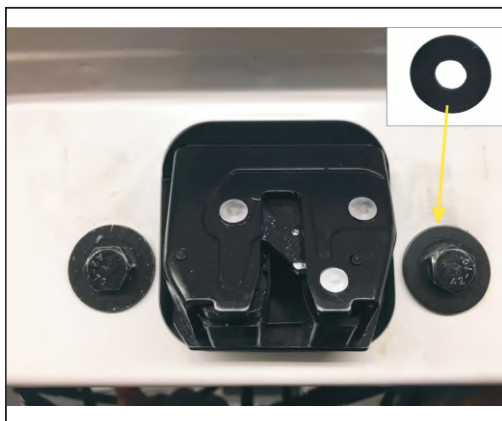
7. With our power plug



8. In the co-pilot left remove the plaque, find the original car central outlet, our yellow Central Line meet the saddle yellow line



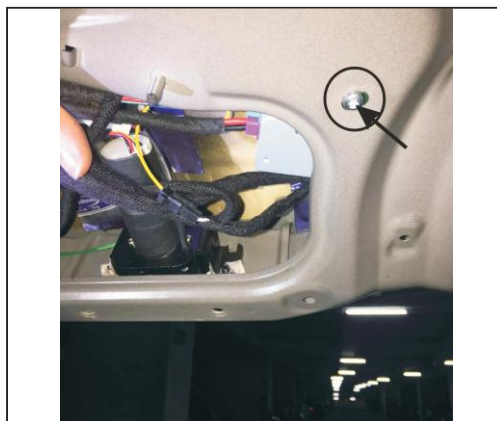
9. Find the seat in the tail door, the main switch of the black line before driving to meet this seat blue line (from left to right for the first row of the first hole), switch before the red line to meet the saddle blue line (the second row of the first hole)



10. Remove the original car door lock, installed on our electric suction, our gasket with the original screw fixation



11. Remove the original lock buckle, installing special lock ring, with the original screw fixation



12. Installation position and control box, with our screw, gaskets, meson



13. Stiletto installation we stern door key,
reducing plaque