

# Installation Instruction

(Mazda CX-5 2012-2016)

## Precautions

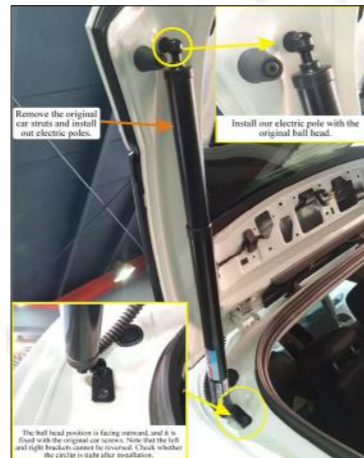
- All pictures in the manual are for reference only. Pictures and objects may differ, but the installation method is the same.
- In order to facilitate your installation, please carefully read the product manual before installation; When installing, protect your car's surface and avoid scratching.
- Please check regularly if all accessories connected with the car are loose to ensure safety.

## Installation Steps

Refer to the parts list and accessory drawings to check if the accessories are complete. After the product is installed, press the tailgate button for 3-5 seconds. You will hear a sound "DI——" and then loose your hand. Press the tailgate button again and close it. You will hear two sounds. Tail gate learning is finished.



1.Remove the original lower right bracket and struts, install our lower right bracket, engraved with "R". The arrow is facing upwards, the ball head is facing the outside of the car, and it is fixed with the original car screws. (Note: Someone needs to hold the door)



2.Remove the original lower left bracket and struts, install our lower left bracket, engraved with "L". The arrow is facing upwards, the ball head is facing the outside of the car, and it is fixed with the original car screws.



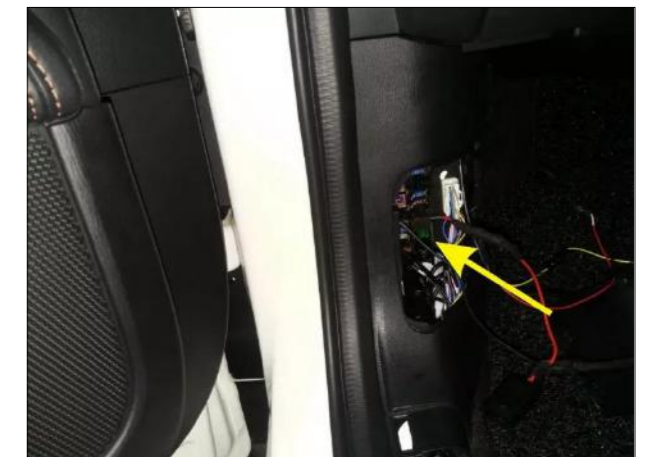
3.Remove the trim panel.



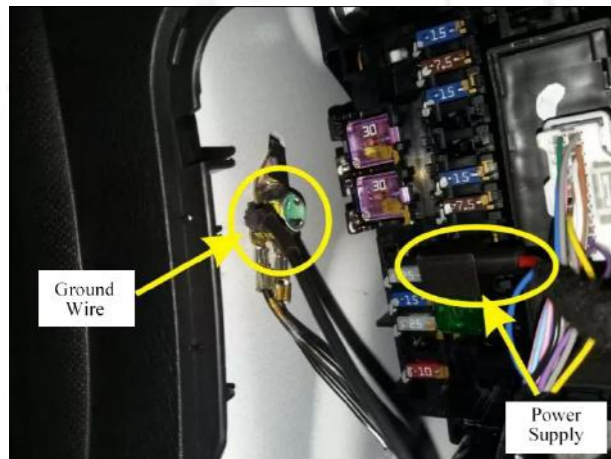
4.Unplug the original car rubber plug, the Hall wire passes through this reserved hole.



5.Hall line is routing to the control box.



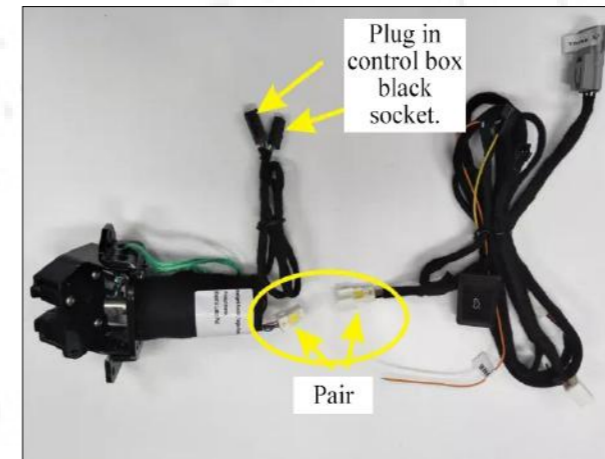
6.Find the power and ground wire at the passenger seat.



7. Connecting the ground wire, unplug the original car 20A fuse on the right side of the ground wire and plug it into our power plug.



8. Remove the trim panel at the main driver, then punches a hole to install the front switch button.



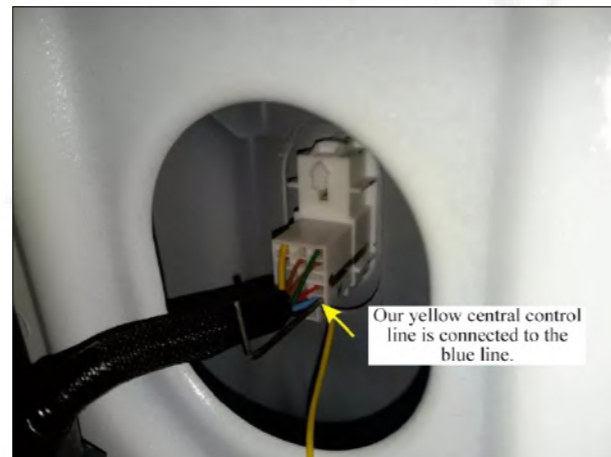
13. Plug in the upper suction socket, as shown in the figure.



14. Remove the original car locks and place 2 shims or 4 shims under each lock ring hole.



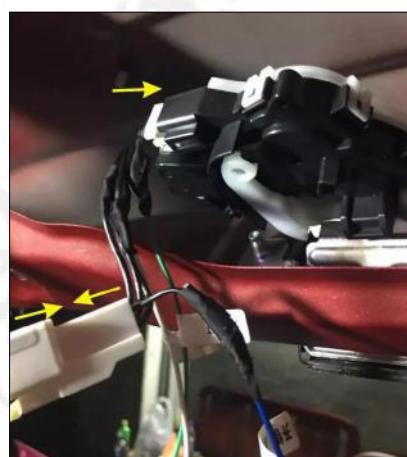
9. Disassemble the trim panel at the main driving belt B-pillar and find the central control line.



10. Our yellow central control line is connected to the blue line (the fifth hole in the first row from right to left).



15. According to the color of socket, insert the plugs into the control box.



11. Unplug this socket at the tailgate lock and insert it into our three-way adapter socket.



12. Remove the original door lock, then install our upper suction lock and fix it with the original car screws.



16. Control box installation position, fixed it with our screws, meson and gasket.



17. Punch a hole on the trim panel. Install our tailgate switch button and restore the trim panel.

After the installation is complete, you must set the tailgate learning. Make sure that the door can be opened and closed in place. (Raise the tailgate to ideal height. Then press the tailgate button for 3-5 seconds. You will hear a sound "DI——" and then loose your hand. Press the tailgate button again and close it. You will hear two sounds "DI DI". Tail gate learing is finished.) If you do not hear two sounds, learning is unsuccessful and you need to re-learn. If you can not close the door, use your hand to push the door to close when you are learning.

## Disclaimer

Due to improper installation and improper use, caused the relevant issues and losses, these not include within our company 's warranty. Thanks for your purchasing our products. Please read the manual carefully before use and collect it for later reference.

## Key Control Method

1. Press the original Key fobs three times to open and close the door.
2. Press the front switch button to open and close the door.

## Setting Height

- 1.Raise the tailgate to the ideal height;
- 2.Press the tailgate switch for 3-5s;
- 3.When you hear a long sound "Di——", loose your hand and press the tailgate switch again to close the door.
- 4.When you hear two sounds "Di Di", Setting height is finished.

Note: Do not close the door with your hands after setting the ideal height.

Be sure to use our own tailgate switch.

## Fault Solution

The original key fob does not work	Check if the yellow central control line is connected.
Not working after installation	1.Check if the positive power supply is connected with 12V-16V. 2.Check if the power fuse is inserted. 3.Check if the ground wire is connected.
Closing the tailgate not in place The tailgate can only open to half	1.Check if the left and right bracket are installed reversed. 2.Check if the control box wire is inserted. 3.Check if the brackets are fixed with our screws. 4.There are two rubbers on the left and right sides of the original tailgate cover. Check if they are loose and need to be tightened.