

# Modern IX45 – electric suction under clause 14 V4.6 installation instructions



1. Remove the original rear door trim



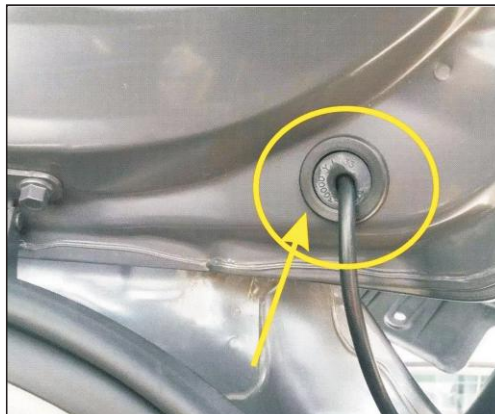
2. Remove the original car poles, ball head installed our poles with the original car



3. Remove the original car bottom bracket, installation, bottom bracket, with screws, install the poles



4. Remove the original car right bracket, installation bracket at the lower right, using screws, install our poles



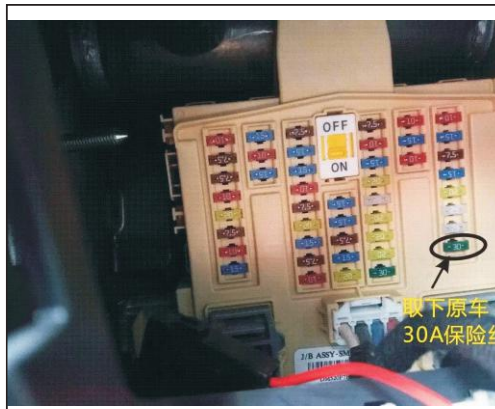
5. Remove the stopper is the original car, hole, hole thread through the original car stopper on the card



6. Door hole line go line to end cover plate control box



7. Remove the plaque, main driving below find power supply, as shown



8. To remove the original car 30 a fuse



9. Plug in our power plug



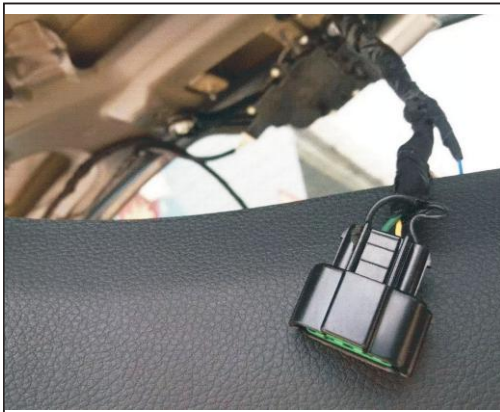
10. In the main drive side trim will be removed, connect the ground wire



11. The main driving belt B column place to remove the plaque, find the control



12. Our yellow lines to Central Line after the seat green unlock (from left to right the second row third bits) Pink line lock line answer the yellow line



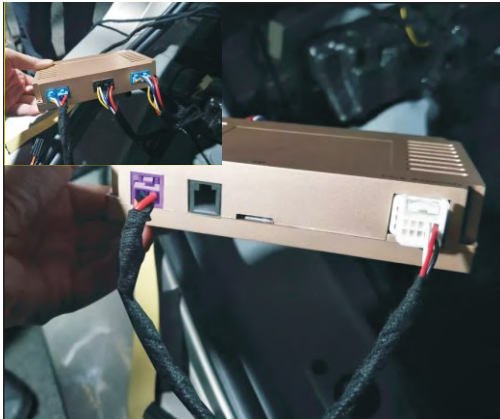
13. At the back door lock head location to find the seat pulled, the tee adaptor to plug with our company, our company three links back to the door at the other end



15. Electrical installation location, with our company 3 m glue and cable tie



16. The electric door suction line go line to end cover central control box, for our control box



17. The hole line, power line, electric line socket according to color a pair of control box



18. In the original rear door trim punch, install our stern door keys